

2025 Annual Report



**UMMA
HEALTH**

Wellness • Care • Community

INSPIRED BY ISLAM



**The Future of
Accessible Health Care**

**EXPANDING ACCESS.
RESTORING DIGNITY.
BUILDING RESILIENCE.**

A Letter from our CEO & Chairman

Adel Syed, Ed. D

Chief Executive Officer, UMMA Health

Paul W. Wong, Esq.

Chair, UMMA Health

To our patients, partners, staff, volunteers, and community:

Twenty-nine years ago, a group of Muslim medical students at UCLA—moved by faith, heartbreak over the 1992 civil unrest, and an unshakeable conviction that South Los Angeles deserved better—opened a free clinic. They had no guarantee it would survive. What they had was each other, their community, and the belief that compassion could be made concrete. That is the spirit that built UMMA Health.

As we reflect on our impact in 2025, we are reminded of that original courage—and we feel its echo in everything we accomplished together this year. This was a year of firsts. Of thresholds crossed. Of communities reached that had never had a home for their health before. We are in awe of what this team, rooted in the Islamic values of service, compassion, human dignity, and social justice, continues to build.

Beyond those numbers live stories. The elder in South LA receiving foot care through our new podiatry service, something unavailable to her before. The child in Watts whose first dental visit ever happened in a mobile unit in her school courtyard. The family in San Bernardino who walked into Al-Shifa Clinic—UMMA's first site outside Los Angeles County—and found not just a doctor, but a medical home.

What unites all of these milestones is the vision we are now building toward: a high-quality, comprehensive health network—for all. Not for some. Not for those who can afford it. For all. In the pages that follow, you will see how every accomplishment this year connects to one of the four cornerstone pieces of our community health model: **the medical services we deliver, the social supports we wrap around our patients, the partnerships that multiply our reach, and the transparency we owe to every person who puts their trust in us.** These are the pieces of the puzzle that—when fitted together—create something the communities of South Los Angeles have always deserved.

Standing at the threshold of our 30th year, we feel both the weight of the responsibility we carry and the joy of carrying it alongside the most dedicated, compassionate team we have ever known. We are not done. We are just beginning to see what UMMA Health can become.



“Healthcare isn’t a privilege—it’s a right. For families, kids, neighbors...everyone.”



52,975
patient visits

UMMA Health’s **first year**
surpassing 50K visits

10K medical
home
patients

18% increase of
patients who
choose UMMA

Locke Wellness Center,
Al-Shifa & South LA’s
first Neighborhood
Urgent Care

3 new
clinic sites

A historic first —
500K lbs
of food distributed
Serving over **32,000**
families

10 schools
reached by Mobile
Dental
8 LAUSD schools +
Al-Huda & Islah LA

The next chapter will be bolder, more connected, and more impactful than anything we have built before. **The community believed in us on day one. We will not stop earning that trust.**



Impact Snapshot 2025

67 Zip Codes Served



ACROSS
9 Locations

Access to Care

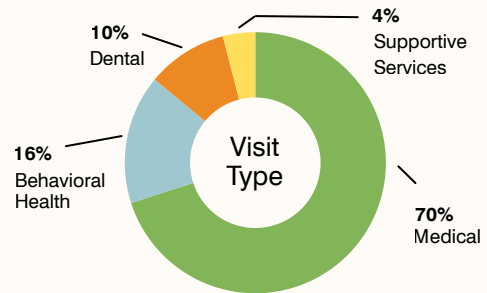
53K

patients served

41% 18%
in clinic visits patient growth

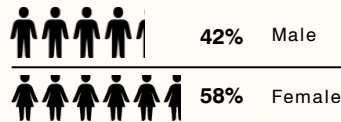
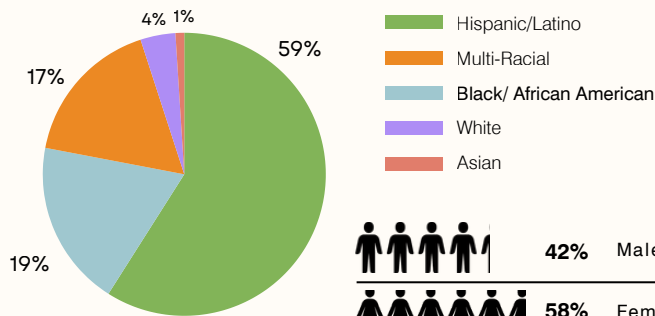
Services Provided

Share of patient visits by service area



Patient Diversity

Who we serve



83%

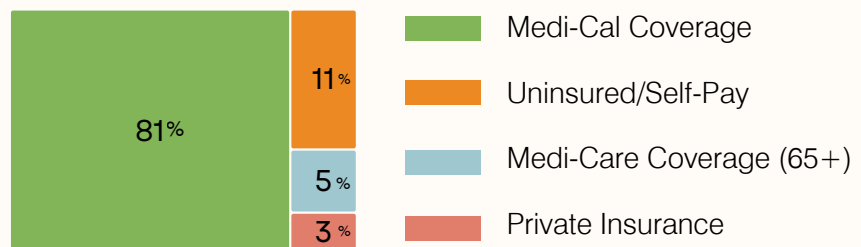
Patients living at or below 200% of federal poverty level

"No matter your background or your financial situation or how sick you are, UMMA will always have your back."

-Kathryn Hickman Windley,
UMMA Patient Board Member



Health Coverage Status



UMMA Board of Directors

Paul Wong, Esq
Board Chair

Dr. Rumi Abdul Cader, MD
Board Member

Sandra Perkins
Consumer Board Member

Dr. Raziya Shaikh, Ph.D
Treasurer

Dr. Munaf Kadri, MD
Board Member

Kathryn Hickman-Windley
Consumer Board Member

Vivianna Trujillo
Secretary

MehdiReza Hirji, CPA
Board Member

Emily Reed
Consumer Board Member

Shaakira Madany
Consumer Board Member

Yolanda Rojero
Consumer Board Member

UMMA Endowment Board

Paul Wong, Esq
Board Chair

Dr. Raziya Shaikh, Ph.D
Treasurer

Dr. Altaf Kazi, MD
Board Member

Dr. Khaliq Siddiq, MD
Board Member

Community at the Core

Our Mission & Vision

UMMA Health's mission is to promote the well-being of the underserved by providing access to high-quality healthcare for all, regardless of ability to pay. Through patient-centered care, UMMA addresses the cultural, spiritual, social, and economic realities that impact health, removes barriers to care, and partners with patients and families to advance health equity and dignity for all.

Our Community Health “Puzzle”

At UMMA Health, our work is guided by a simple but powerful belief: lasting health is built through connection. Not just between patient and provider—but across services, systems, and community.

Our model is not a single solution. It is a connected framework where each piece strengthens the others. It is a holistic approach designed to meet patients where they are and support them at every stage of their journey.

By integrating high-quality care with essential resources and trusted partnerships, we are building a comprehensive health network rooted in dignity, access, and, accountability. **In the following pages, look for the corresponding puzzle icon to see how our work corresponds to the puzzle below.**

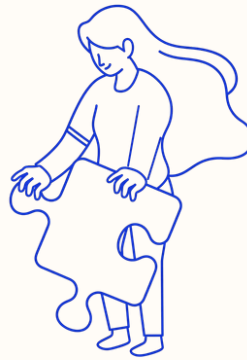
Medical Services

High-quality, culturally responsive care is at the core of everything we do. From primary care to expanding specialty and urgent care services, we ensure our patients receive the treatment they need—when and where they need it.



Partnerships

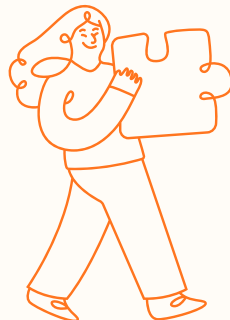
Strong partnerships help us expand access to care while strengthening the communities we serve. Through collaborations with schools, community organizations, and healthcare institutions, we support healthier futures and create pathways for the next generation of healthcare professionals.



Whole-Person Care

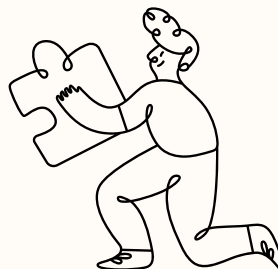
Social Supports

Health extends beyond the clinic walls. Through food distribution, case management, and wraparound services, we address the social factors that shape well-being and long-term outcomes.



Transparency

Trust is built through openness. We are committed to accountability, clear communication, and responsible stewardship—ensuring our community and supporters remain informed and engaged.



Every milestone we achieved this year reflects the strength of this model. In the pages ahead, you'll see how each accomplishment connects back to these four pillars—working together to create a healthier future for all.



Award-Winning Care

The UMMA Difference

UMMA Health offers comprehensive primary care for the whole family — all under one roof. From routine check-ups to the screening, diagnosis, and management of conditions like diabetes, hypertension, and asthma, our care is built around consistency, prevention, and patient education. We partner with our patients through every stage of life, supporting the lifestyle changes and informed choices that lead to lasting health.

UMMA is a proud, award-winning health center recognized by the **Health Resources and Services Administration (HRSA)**—the federal agency that oversees Federally Qualified Health Centers (FQHCs). Explore our awards below and on the following pages.



Awarded by HRSA to the **top 10% of health centers** nationwide for the best overall clinical quality performance.



Recognizes health centers that have measurably **increased** the number of **patients served** and **expanded access** to comprehensive services.



Recognizes health centers leading the charge in preventive care. Achieving top results in areas such as immunizations, cancer screenings, and other preventive measures.



Awarded to health centers demonstrating excellence in Health IT adoption, telehealth, data exchange, patient engagement, and social risk factor collection.

Medical Services Offered

- Adult Care
- Behavioral Health
- Care Coordination
- Case Management
- Chronic Disease Management
- Dental Care
- Family Planning
- Health Education
- Immunizations
- Insurance Enrollment & Support
- Onsite Mammography
- Pediatric Care
- Podiatry
- Pregnancy Care
- Senior Care
- STI Prevention & Treatment
- Women's Health



Setting the Standard

Reimagining Diabetes Care

In 2025, UMMA Health launched a specialized Diabetes Clinic grounded in American Diabetes Association guidelines and built on a simple conviction: people with complex, uncontrolled diabetes deserve more time, more support, and care that sees the whole person.

The clinic replaces episodic visits with a structured, team-based pathway. Patients begin with a 60-minute RN intake — covering medication reconciliation, Continuous Glucose Monitor (CGM) training, nutrition education, and care-gap closure. Extended RN follow-ups address social needs like food insecurity, housing, and transportation, so that by the time the physician joins, the patient is informed and engaged. Care is delivered in patients' preferred languages, and dietary guidance honors cultural food traditions.



Fun Fact: UMMA has a team of 10+ Nurse Practitioners trained in diabetic, pediatric, and womens care



Patients reached an A1C below 9% in an average of 36 weeks — a pace that reflects durable behavior change.

200+

Patients Served

-2.9%

Average A1C Improvement

69%

Achieved A1C Reduction

25%

Reduced Diabetes Risk

A Lifeline for Limbs: Weekend Podiatry Care

Launched in 2025, our weekend podiatry clinic at Fremont Wellness Center has been fully booked from day one — a clear reflection of how critical this service is to our community.

For patients living with diabetes, foot health can be a matter of life and limb. Nerve and blood vessel damage often goes unfelt, allowing small cuts and sores to silently escalate into ulcers, serious infections, and even amputation. **Nationally, nearly 70% of all lower-limb amputations are linked to diabetes complications — most of them preventable with regular specialist care.**



UMMA Met or Exceeded National Standards in Child/Adolescent Nutrition, Adult BMI, and Managing A1C Levels.

"For our patients, this clinic is not a luxury. It is a lifeline."

349

Patients Served

893

Visits Delivered



Innovating Women's Health



274

Prenatal Patients Served

152

Child Births

40

Patients Enrolled in Centering

1,494

Prenatal Visits

0

NICU Admissions

37

Full-Term Centering Deliveries

Expanding Access to Cervical Cancer Screenings

UMMA Health's Quality and Population Health team monitors 32 quality measures across chronic care, prevention, prenatal, pediatric, behavioral health, and dental services — and uses that data to close gaps and reduce disparities for the patients we serve.

In 2024, 44% of our eligible patients were screened for cervical cancer — a number we knew had to change. By the end of 2025, the screening rate had climbed to **58%** — a **16-percentage-point jump**, with most of that growth in Q4 thanks to a single innovation: HPV self-swab testing.

Self-swab allows patients to collect their own sample for HPV testing — no speculum, no pelvic exam — while still being seen in clinic. Research confirms the results are just as accurate as provider-collected samples. UMMA Health was among the earliest health centers in the state to adopt this option.

+16%

Cancer Screening Rate (2024 to 2025)

TOP 25% of CA Health Centers

32

Quality Measures Actively Monitored

Prenatal Care

UMMA Health's prenatal program is built on a simple belief: pregnancy is a time when families need more support, not less. Through comprehensive prenatal care, nutrition and lactation support, behavioral health, and transportation assistance, we walk alongside our patients — and their partners and support people — at every step.

Two care models anchor the program.

1. **Comprehensive Perinatal Services Program** offers culturally responsive, individualized care from pregnancy through 60 days postpartum — strengthened in 2025 by a dedicated Midwife who joined our team to expand access.
2. **CenteringPregnancy** delivers group prenatal care in 90-minute sessions that combine health assessments, education, and peer support, in both English and Spanish.



What began as a prenatal program became a circle of mothers raising each other up.



Dr. Ferrell took the time to listen to all my concerns and help me understand them — holistically, and with the science behind them. She made sure all my prenatal visits were with her, so I felt comfortable throughout my whole pregnancy. I really wanted a VBAC, and she helped me achieve it. I'm truly thankful for having her as my provider.

—UMMA Prenatal Patient



Watch CenteringPregnancy in Action



Excellence in Behavioral Care



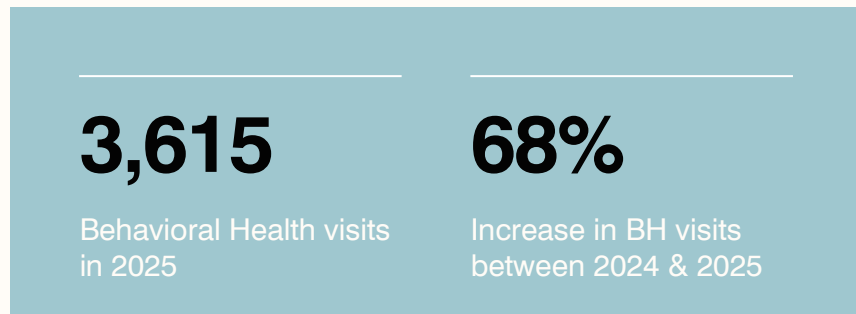
A **Top 25%** Health Center for Treating and Screening for Depression

Real Results:
“They spent time listening to my worries! For once, I felt heard.”

Behavioral Health

Launched in 2015, UMMA’s Behavioral Health program is a cornerstone of our whole-person care model. Services include individual and family counseling, couples therapy, case management, substance use disorder (SUD) treatment and counseling for mild to moderate symptoms, grief counseling, chronic disease prevention, and diabetes education.

UMMA’s Medically-Assisted Treatment (MAT) Program treats alcohol, nicotine, and opioid use disorders by pairing FDA-approved medications with counseling, behavioral health supports, and ongoing medical care. For many patients—who may face trauma, community criminalization, and limited access to care—MAT is a life-saving service that supports recovery.



Integrated Care Program

In partnership with the Los Angeles County Department of Mental Health (DMH), UMMA Health’s Integrated Care Program serves **over 100 patients** living with chronic medical conditions, mental illness, and substance use challenges by providing culturally responsive prevention services, including behavioral health and psychiatry, and coordinating both traditional and non-traditional care.

Ultimately, our Integrated Care Program promotes physical, mental, and emotional well-being throughout South Los Angeles by combining clinical care, wellness activities, and community connections.

Our full list of wellness services include:

- Zumba • Chair Stretch • Meditation • Tai Chi • Mosaic Art • Empowerment Sessions • Massage Therapy • Chiropractic Care • Stretch Therapy





Growth and Expansion

Al-Shifa Clinic

Opened in February 2025, Al-Shifa Clinic represents a major step forward in expanding UMMA Health’s reach beyond Los Angeles County, bringing high-quality, culturally responsive care to families in San Bernardino County for the first time.

Through a strong foundation of clinical services and community partnerships, Al-Shifa has quickly become a trusted medical home for patients seeking accessible, comprehensive care.

1,876

Total Patient Visits

7

Physicians, Medical Assistants & Clinical Pharmacist on Staff



Care that Travels with Family - A Patient Story

For one local family, caring for an elderly mother means thinking across continents. Whenever she visits from Pakistan to spend time with relatives in San Bernardino County, one of her son's first calls is to Al-Shifa Clinic — one of our community health centers. What started as a single appointment has become part of every trip: a trusted place to make sure her health is looked after while she's in the U.S.

Appointments are easy to schedule, visits are low-cost, and immigration status is never part of the conversation. For families managing international visits, care without those barriers is hard to find. At UMMA Health, it's simply how we do things.



Mobile Dental Clinic

Every Child Has a Right to a Healthy Smile

Oral health is one of the most overlooked — and most urgent — needs among children in underserved communities. In South Los Angeles, untreated tooth decay is a leading cause of school absenteeism, affecting children’s health, confidence, and ability to learn.

UMMA Health’s Mobile Dental Program brings high-quality dental care directly to children where they are — at school. Our mobile unit served 10 schools in 2025 - delivering cleanings, exams, and preventive treatment directly on campus. But the need is far greater. In 2026, the program has a goal to expand to 20 South LA schools.



We are one of the only health centers that bring dental care directly to schools — for every student, regardless of insurance status, including follow-up care.

- Dr. Dina Mismar, Dental Director



250

Students Served in 2025

10

Schools Served



Neighborhood Urgent Care

Opened in December 2025, UMMA Health's Figueroa Care Center brings a new level of accessibility and responsiveness to South Los Angeles, ensuring patients receive timely care without barriers.

Designed to meet immediate health needs, urgent care expands our continuum of services while reinforcing our commitment to high-quality, patient-centered care.



No Scheduling Required

Walk-in Appt.

Built for Working Families

Extended Hours

Faster Diagnosis & Treatment

On-Site X-Ray



Take a Walkthrough of Our New Urgent Care Center!

Faster Care. Stronger Outcomes.

When a longtime UMMA patient slipped on a curb and felt something give way in his ankle, his first instinct was to wait it out — emergency room visits had always meant hours of sitting, mounting bills, and no clear answers. Instead, a family member suggested he try UMMA's new Neighborhood Urgent Care Center, just a few blocks from home.

He walked in without an appointment. Within minutes, he was being examined, and within the hour, an X-ray taken on-site confirmed a clean fracture. The care team splinted the ankle, walked him through next steps, and arranged a follow-up referral — all before the workday was over.



“This expansion reflects UMMA Health’s commitment to building a full continuum of care — from primary care to urgent needs — meeting patients wherever they are”



Care Beyond the Clinic

Food Security Initiative

For more than eight years, UMMA Health has been a leader in advancing food equity in South Los Angeles. Through our Food Security Initiative and weekly Free Food Fairs, we distribute more than 450,000 pounds of fresh produce annually — feeding over 30,000 individuals at no cost. **Last year, we surpassed 500,000 pounds for the first time in program history.**

Distributions take place at LAUSD school sites and bimonthly at Fremont Wellness Center, where food reaches both community members and 20 partner organizations. As the largest distributor of Food Forward produce in South LA, our sites also serve as community anchors — offering health education and direct connections to local resources alongside every bag of food.

500K+

Pounds of Food Distributed in 2025

20

Partner Organizations

30K+

Families Served



Programs Team Member Ramon Rojas is pictured helping community members carry fresh fruits at a weekly food distribution

Bringing Care Home

Every year, thousands return to our community after incarceration — many living with chronic illness and without a clear path to care. Launched in December 2024, Project RENEW connects people to health care and support services before they ever walk out of jail, reaching individuals within 90 days of release from Los Angeles County jail.

Our team is led by Peer Navigators with firsthand reentry experience, supported by a Case Manager who builds individualized care plans and a Housing Navigator who helps clients set realistic housing goals. Together, they connect patients to primary care, HIV and Hepatitis treatment, mental health and substance use services, and workforce readiness support.

UMMA Health is one of only 54 organizations nationwide — and the only health center in Los Angeles County — selected by federal health authorities to pilot this reentry care model.

Meet the Project RENEW Team!



Team Members Benjamin Guerrero and Cornelious Thompson were added to the team in 2025!



Education at the Forefront



UMMA's School-Based Care Model

Our partnership with LAUSD wasn't built overnight. It grew slowly — visit by visit, student by student — over more than a decade of showing up for South Los Angeles. And it keeps growing, because when something works, you build on it.

In January 2025, we opened the **Locke Wellness Center**, our third school-based health center on an LAUSD campus. That same year, we expanded food distribution to a fourth LAUSD site and grew our mobile dental program to ten schools — eight LAUSD campuses and two private schools.

10 schools served by our mobile dental program

3 school-based health centers on LAUSD campuses

4 LAUSD sites receiving food distribution

But our presence reaches well beyond the clinic walls. Through our Student Health Leaders program, UMMA staff support student-led health clubs and advocacy on the issues students choose — healthy relationships, hygiene, substance use prevention, nutrition. We also partner with teachers on classroom health education. Together, this work creates a pathway to the Wellness Center, where students can confidentially access services ranging from reproductive to behavioral health.



When we treat a child's toothache, we're also protecting their education.



Did You Know?

Oral health issues are among the leading causes of school absences in LAUSD

When students are healthy — physically, mentally, and with reliable access to food — they come to school ready to learn. When we treat a child's toothache, we're also protecting their education. When we connect a family to mental health support, we're helping a student stay in their seat and in their future.





2025 Supporters

We would like to extend our gratitude to our funders and community partners. Their support is instrumental in helping us continue to deliver on our promise to provide high-quality healthcare for all.



Individual Contributions

In 2025, Individual donors contributed **\$883,688** in general operating and zakat support to fund expansion efforts and patient care at UMMA Health.



Transformative Partnerships



Direct Relief

Direct Relief is an international leader in emergency response and a key partner to UMMA. Each year, they provide life-saving operational and medical support to UMMA patients. In 2025, they provided the following grants:

- **Emergency Operating Grant (Jan 2025)** — LA Wildfire response support; HEPA air filters and portable power stations across sites.
- **Emergency Preparedness Grant (Sept 2025)** — Mobile Van for rapid response, upgraded communication and security systems, and emergency preparedness staff trainings.
- **Power for Health Grant (Multi-Year)** — Solar panel installation at Florence Clinic — reliability during outages, safer medication storage, lower operating costs, reduced emissions.

Grants Funded

Total Value

Three

\$543,500

University Partnerships

Training the Next Generation

UMMA partners with leading universities to train the next generation of medical and dental professionals — spanning clinical medicine, dentistry, nursing, behavioral health, and public health. With approximately 170 staff, UMMA supports over 90 active student trainees per year, among the highest student to-staff ratios of peer community health centers.



Student Trainees

University Partners

90+

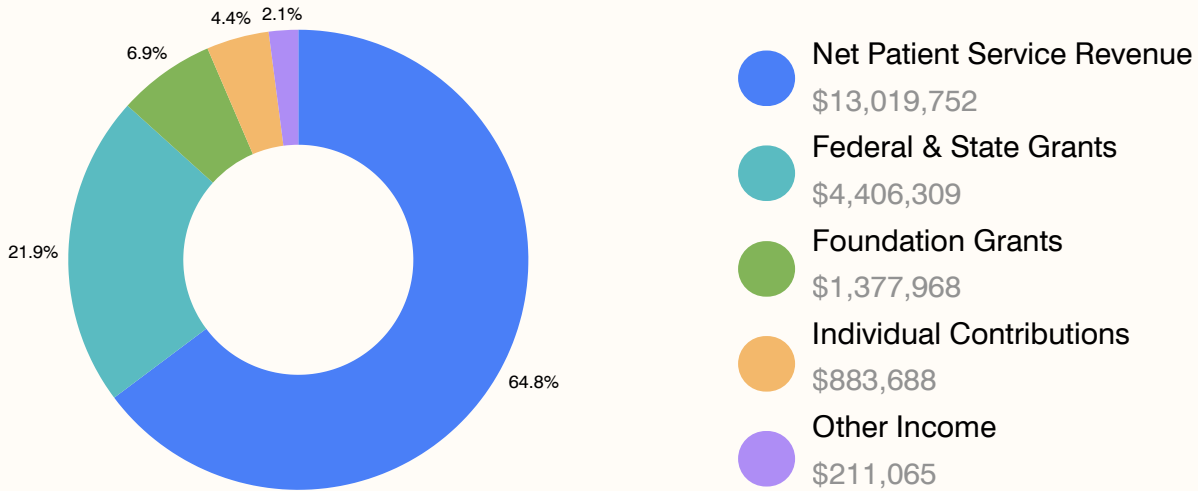
5



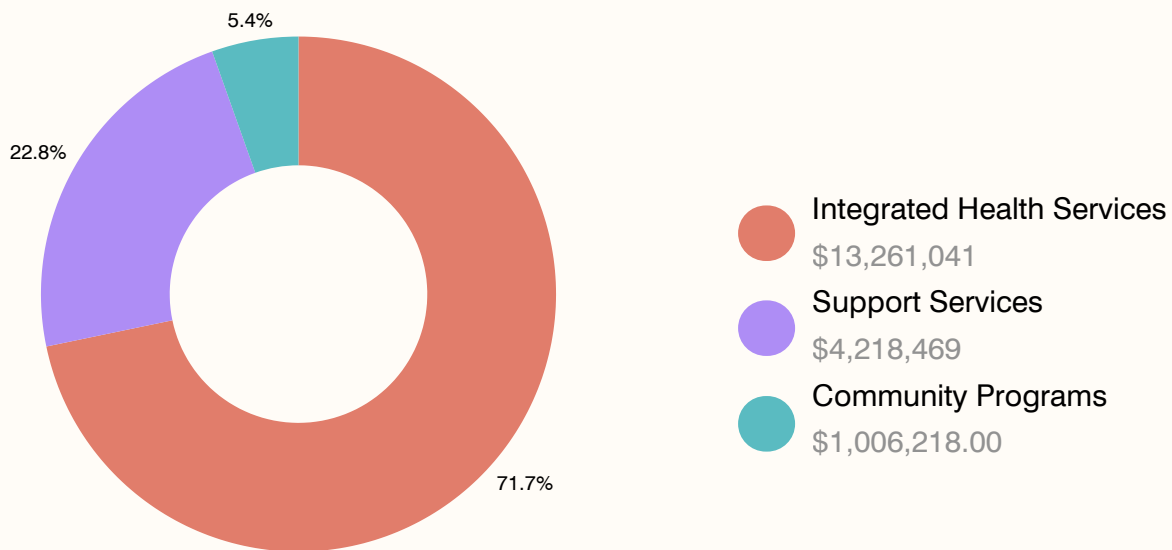


2025 Financial Report

Revenue 2025



Expenses 2025



Total Operating Revenue

\$19,898,782

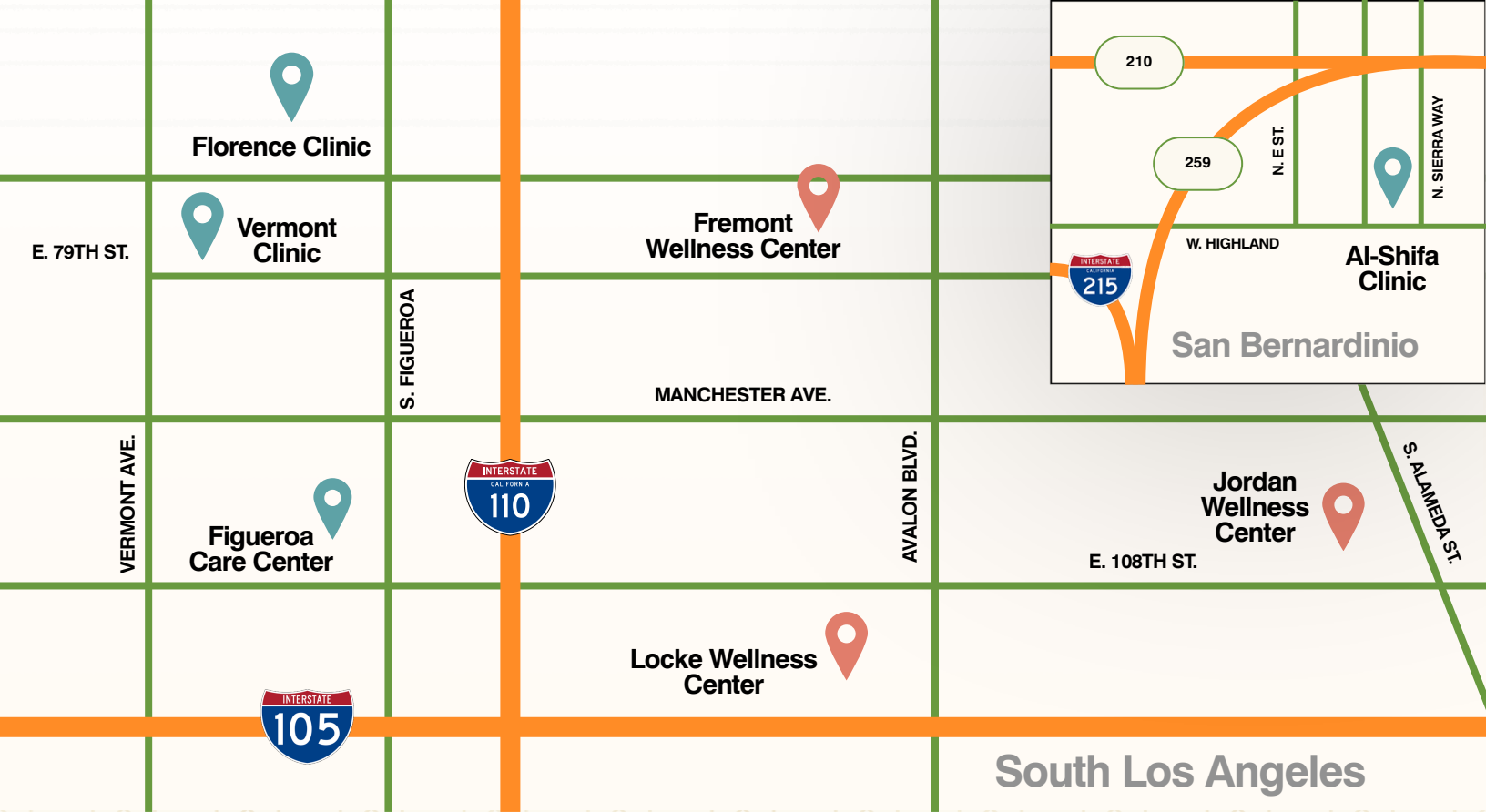
Total Expenditures

\$18,485,728

Investment in Patient Care

\$1,413,054

**Unaudited Financial Statement*



Clinic Locations

Al-Shifa Clinic

7641 Sierra Way,
San Bernardino, CA 92405

Florence Clinic

711 W Florence Ave.,
Los Angeles, Ca 90044

Figueroa Care Center (Urgent Care)

10421 S. Figueroa St.,
Los Angeles, CA 90044

Vermont Clinic

8114 S. Vermont Ave.
Los Angeles, CA 90044

Your healthcare journey starts at an UMMA Health center near you, schedule an appointment today!

School-Based Health Centers

Fremont Wellness Center

7821 S. Avalon Blvd
Los Angeles, CA 90003

Jordan Wellness Center

2265 E 103rd St.
Los Angeles, CA 90002

Locke Wellness Center

316 E 111th St.
Los Angeles, CA 90061



6814 PACIFIC BLVD., HUNTINGTON PARK, CA 90255

FOLLOW US ON SOCIALS



(323) 789-5610

UMMAHEALTHCA.ORG

INFO@UMMAHEALTHCA.ORG